

**REPLACEMENT OR
ADDITIONAL MANUALS
AVAILABLE AT
EXTRA COST.**

**KIWI CODERS CORPORATION
MODEL 71 CODER**

KIWI CODERS CORPORATION - 265 E. MESSNER DRIVE, WHEELING, IL 60090-6495 USA
PHONE: 847-541-4511 FAX: 847-541-6332
E-MAIL: info@kiwicoders.com INTERNET: www.kiwicoders.com

**GIVE SERIAL NUMBER OF YOUR PRINTER WHEN ORDERING PARTS.
ORDER PARTS BY FULL DESCRIPTION AND PART NUMBER.**

PARTS LIST - Model 71

Fig. 2

ITEM	DESCRIPTION	PART NO.	QTY
1	Assy, Marking Wheel Cover	F038056	1
2	Assy, Marking Wheel	F038058	1
3	Assy, Timer	F038029	1
4	Knob	F036964	1
5	Thumbscrew 10-32	F036987	3
6	Washer, 1/4 ID	F035117	3
7	Cover, Marking Wheel	F038036	1
8	Ring, Retaining - 1/4	F035093	3
9	Ring, Retaining - 3/4	F037013	1
10	Track, Drive - Rubber	F035035	2
11	Wheel, Marking	F038037	1
12	Bearing 3/8 ID X 7/8 OD	F093209	1
13	Ring, Retaining - Int	F037001	1
14	Spring, Garter	F036960	2
15	Ring, Retaining - Ext	F011152	1
16	Washer, 1/2 ID	F037021	1
17	Screw 10-32 X 1/2	F011153	1
18	Axle, Pulley	F036977	1
19	Pulley, Timer w/o hub	F036976	1
20	Washer, Lock #10	F011162	1
21	Bushing, Flanged	F036969	1
22	Arm, Cam Follower	F036966	1
23	Spacer, Cam Follower	F036961	1
24	Bearing, 3/16 ID X 1/2 OD	F011170	1
25	Screw, 10-32 X 3/4	F037011	1
26	Plate, Indexing & gear	F038032	1
27	Bearing, Sleeve - nylon	F036954	1
28	Axle, Marking Wheel	F036971	1
29	Plate, Cam	F036970	1
30	Pulley, Timer with hub	F036975	2
31	Screw, Shoulder 10-32 x 5/16	F037019	2
	Adapter	F037386	1

KIWI CODERS CORPORATION - 265 E MESSNER DR., WHEELING, IL 60090 USA
phone: 847-541-4511 fax: 847-541-6332

GIVE SERIAL NUMBER OF MACHINE WHEN ORDERING PARTS.
ORDER PARTS BY FULL DESCRIPTION AND PART NUMBER.

FIGURE 2

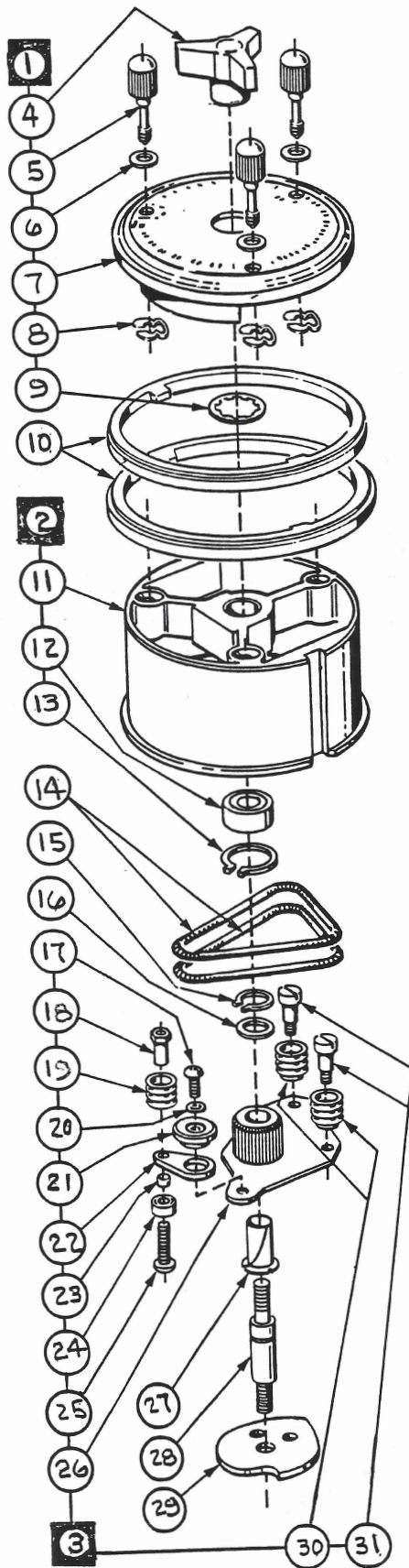
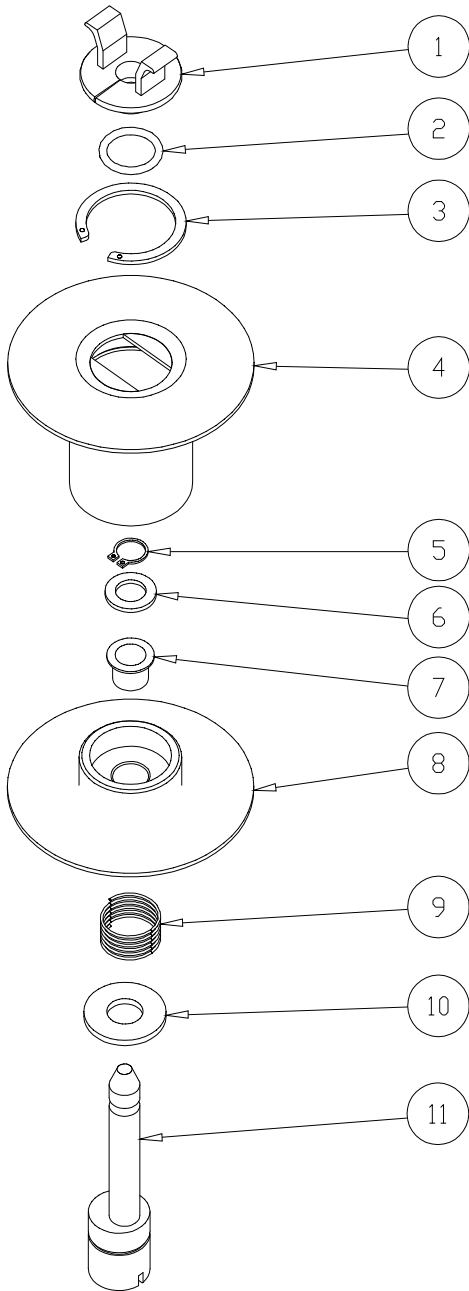


FIGURE 3



REVISIONS			
SYM	DESCRIPTION	DATE	DRAWN BY

<i>BILL OF MATERIALS</i>			
ITEM	DESCRIPTION	PART NO.	QTY
1	FINGER GRIP	F036959	2
2	O-RING	F037004	1
3	RETAINING RING, 1-1/4 INTERNAL	F037002	1
4	INKER SPINDLE - ONLY	F038033	1
5	RETAINING RING, 3/8 EXTERNAL	F035092	1
6	WASHER, NYLON, 3/8 X 5/8 X 1/16	F035126	1
7	SLEEVE BEARING, NYLON, 3/8 ID	F036955	1
8	INKER SUPPORT FLANGE	F036958	1
9	COMPRESSION SPRING, INKER	F037016	1
10	WASHER, STEEL, 3/8 X 1 X .09 THICK	F011173	1
11	ECCENTRIC AXLE	F036988	1

THIS ASSEMBLY USED AFTER 11/6/06
FOR MODEL 71 ONLY
ALSO USED AS A RETROFIT


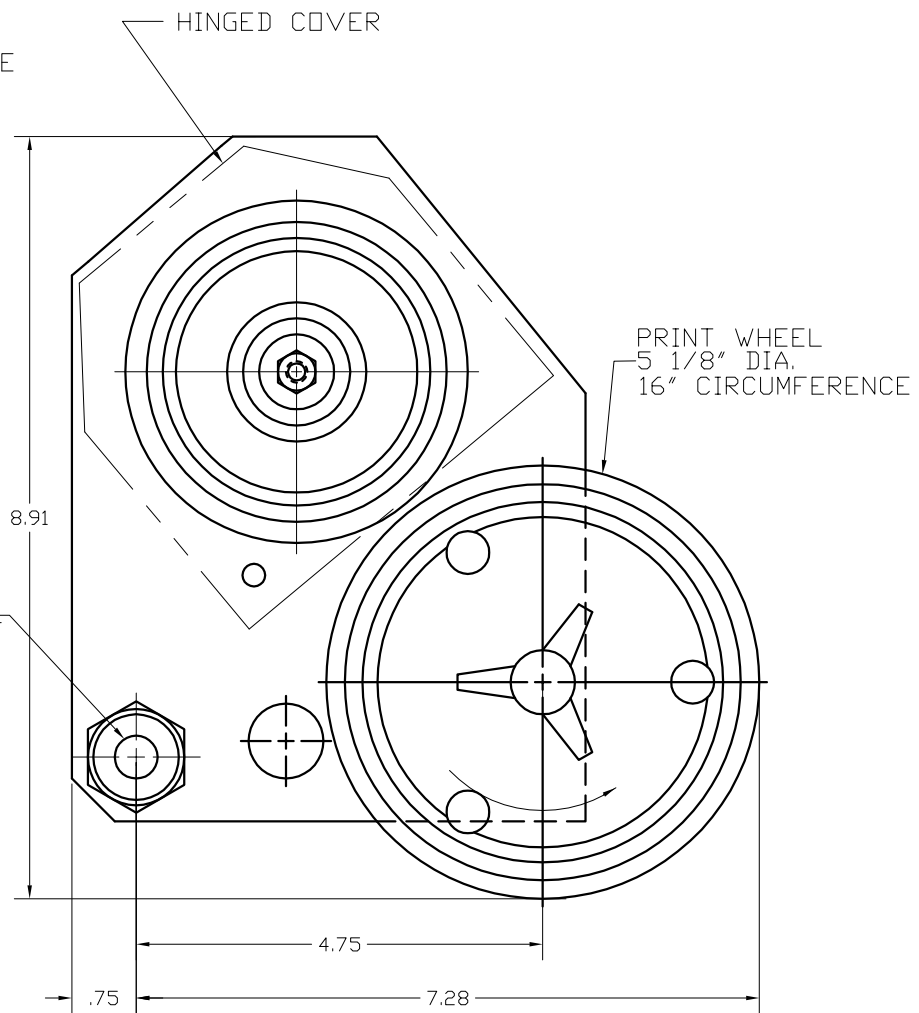
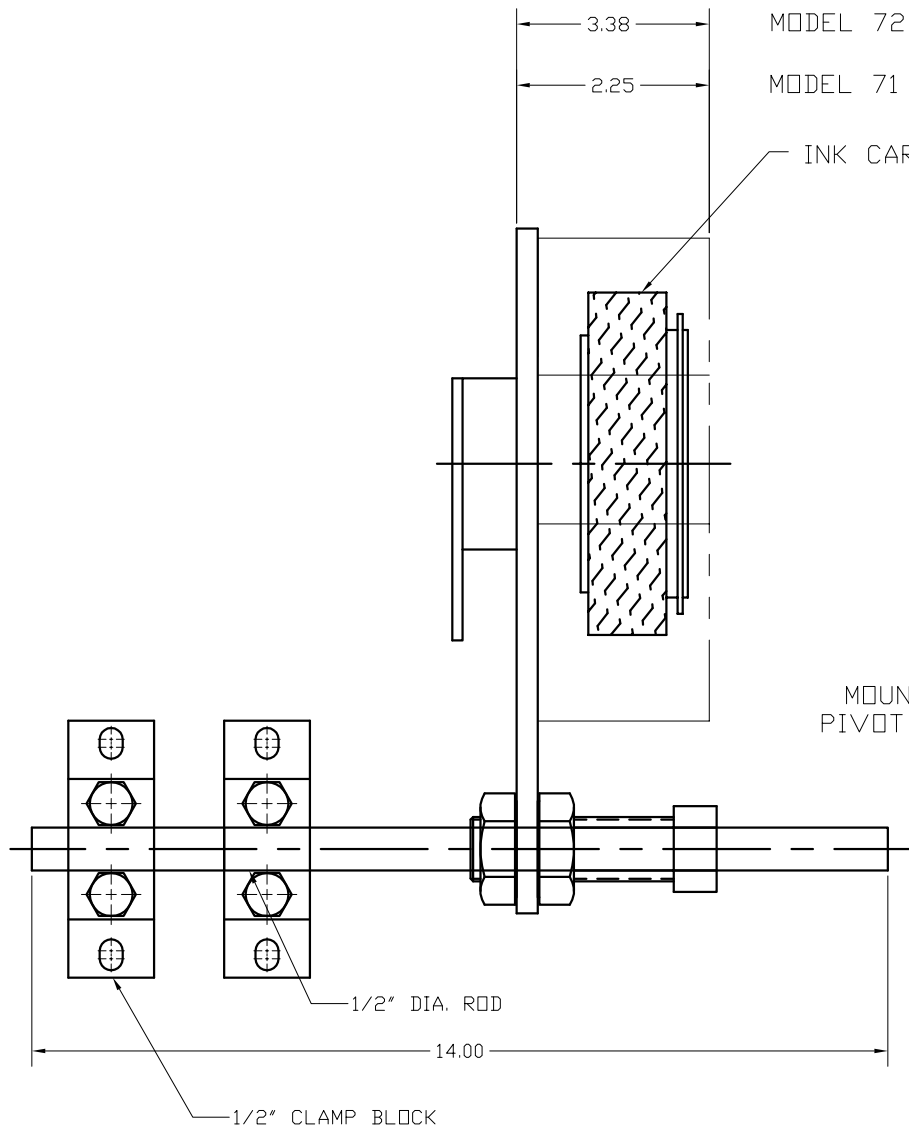

		KIWI CODERS CORPORATION	
		265 E. MESSNER DR. WHEELING, IL. 60090	
TITLE		ASSEMBLY, INKER SPINDLE FOR MODEL 71	
SCALE	NTS	DATE	12/10/07
DRN BY		MR	
TOLERANCES UNLESS OTHERWISE SPECIFIED:		dec .00 + -.015 dec .000+-.005 ang +- 1/2 deg	DWG FC38288
REV			

FIGURE 4

REVISIONS			
SYM	DESCRIPTION	DATE	DRAWN BY

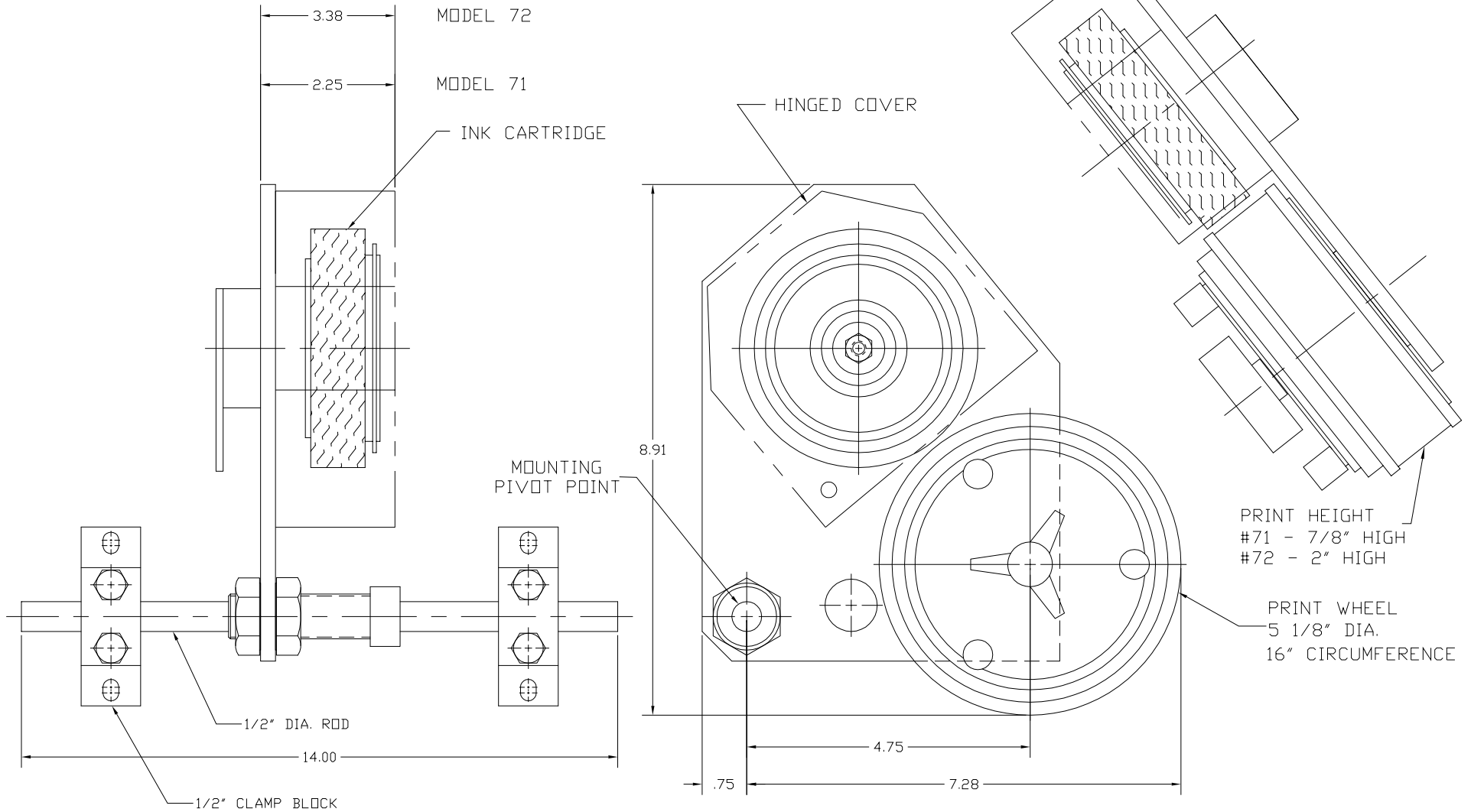



	KIWI CODERS CORPORATION 265 E. MESSNER DR. WHEELING, IL. 60090		
	TITLE SERIES 70 CODER SIDE MOUNT		
SCALE NTS	DATE 2/14/94	DRN BY TM	
TOLERANCES UNLESS OTHERWISE SPECIFIED:		DWG BC38734A	REV

dec .00 + -.015
 dec .000+-.005
 ang +- 1/2 deg

FIGURE 5

REVISIONS			
SYM	DESCRIPTION	DATE	DRAWN BY



	KIWI CODERS CORPORATION 265 E. MESSNER DR. WHEELING, IL. 60090		
	TITLE SERIES 70 CODER		
SCALE	NTS	DATE	2/14/94
DRN BY TM			
TOLERANCES UNLESS OTHERWISE SPECIFIED:		dec .00 + -.015 dec .000 + -.005 ang +- 1/2 deg	DWG BC38734
			REV

TYPE SYSTEMS

The Series was designed to accept the following type systems:

1. KIWI Channellok Deepcut Type (standard).
2. Baselock type (optional).
3. KIWI Adhesive Back Printing Mat. (optional)

In all cases, the type projection beyond the rubber drive tracks is approximately .020". These three type systems are described below:

A. Channellok Type

See KIWI Bulletin No. 191. KIWI deep cut channellok type is available in either individual characters or in strips containing full words, messages or numerals.

KIWI Channellok Deepcut Type is available for the Series as listed below.

CHARACTER HEIGHT (inches)	(mm)	STYLE
3/8	10	227D
7/16	11	228D
1/2	13	229D
5/8	16	230D
3/4	19	231D
7/8	22	232D
1	25	400D
1-5/16	33	401D

The figure at the right shows the general Channellok assembly, while the figures shown below will aid in selecting the proper type for your requirements.

First, determine the character height and the body size of the type. Then, using the charts and figures below, make certain that your type needs do not exceed the available space in the marking wheel.

The "H" dimension shown in chart "a" is the space required for a single line of type. For multiple lines of type, add the "H" dimensions together. The total must not be greater than the available space in the marking wheel ("J" dimension shown in Fig. 8

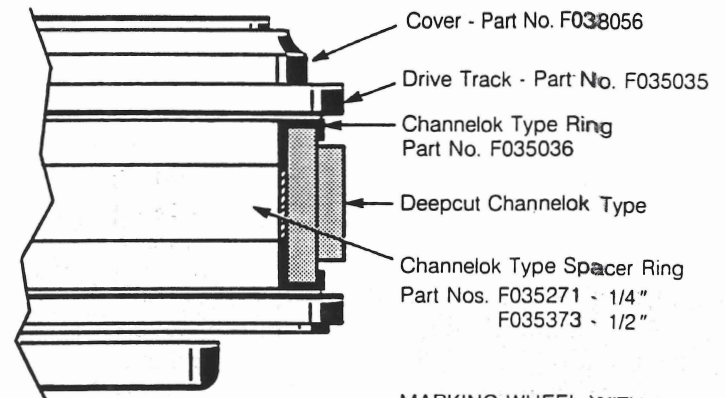


FIGURE 7

MARKING WHEEL WITH CHANNELLOK TYPE

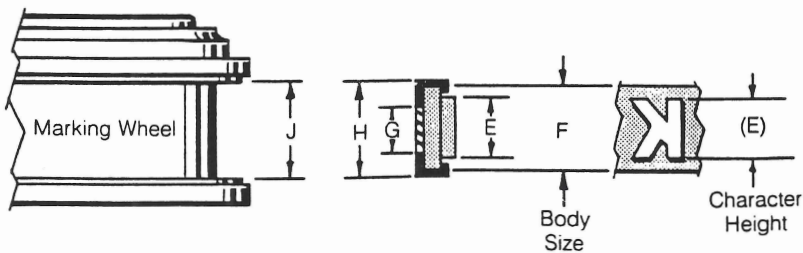


FIGURE 8

a.

CHARACTER HEIGHT E	BODY SIZE F	SPACER DIMEN. G	SPACE REQ'D. H
3/8	1/2	0	5/8
7/16, 1/2, 5/8	3/4	1/4	7/8
3/4, 7/8	1	1/2	1-1/8
1	1-1/4	3/4	1-3/8
1-5/16	1-1/2	1	1-5/8

Two ink cartridge systems are available. These are the Kiwi K-1 precharged, throw away Ink Cartridge and the K-2 Reinkable Cartridge. These Cartridges are mounted to the Inker Hub Assembly as shown below.

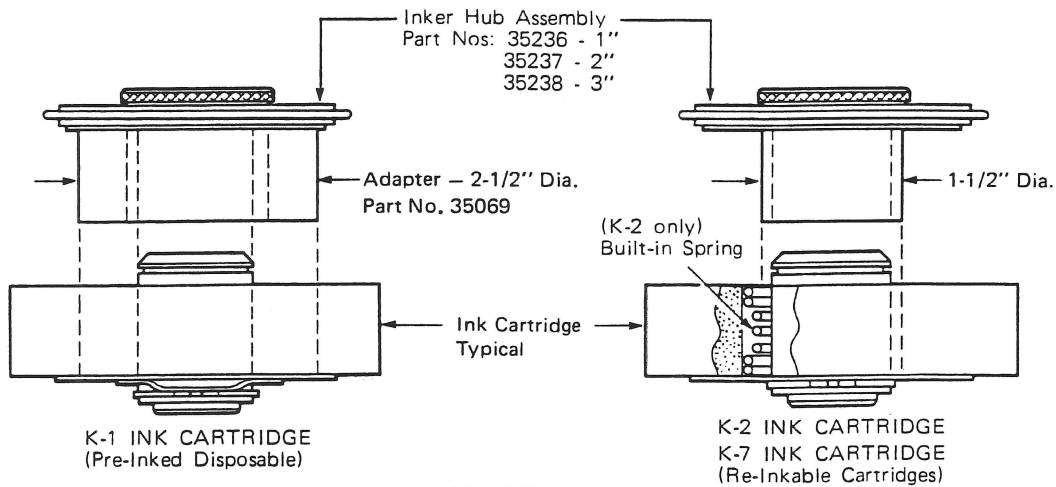


FIGURE 10

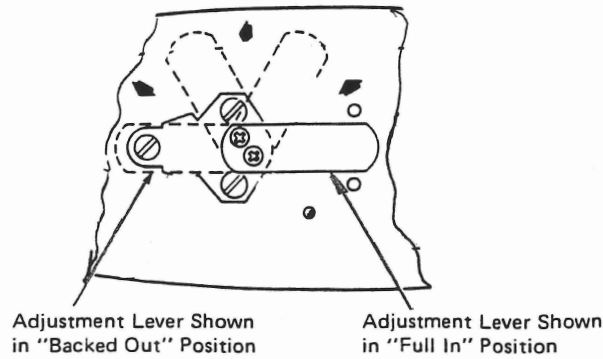
Designed for quick change, the Ink Cartridge assembly "snaps" into place on the Inker Spindle.

- A. **K-1 Ink Cartridge.** The K-1 Cartridge is fully charged with ink and cannot be reinked. It was designed as a disposable unit. Standard face widths are 1, 2 and 3 inches, however, the 1 inch face units are stacked for the desired width. They are available in black, red, green and blue colors.
- B. **K-2 Ink Cartridge.** The K-2 was designed for those who wish to reink. A built in spring permits

the K-2 to float. This prevents misadjustment which could interfere with proper operation of the marking wheel. Constant pressure on the K-2 outer covering by the integral spring extends its life. To obtain the free "floating" action, Item No. 34, P/N 35085, Wave Washer Spring, must be removed from the Inker Hub Assembly. K-2 ink is available in black, red, green and blue colors.

C. Ink Cartridge Adjustment. The ink cartridge spindle is easily adjustable without the use of tools. An eccentric adjustment built into the

Inker Axle permits a total adjustment range of approximately 0.180 inches.



It is recommended that the Ink Cartridge be fully backed out when changing Cartridges. In the fully backed out position, there is approximately 0.040 inch (1mm) clearance between the Marking Wheel and Ink Cartridge.

Use kiss contact between the Ink Cartridge and rubber type. Excessive pressure will:

- a. Restrict Marking Wheel rotation.
- b. Cause premature wear of the Ink Cartridge,
- c. Reduce Ink Cartridge mileage.

VII OPTIONAL EQUIPMENT

A. Anti-Repeat Assembly—Part F038051

This option is recommended for:

- a. Precise imprint registration.
- b. Preventing imprint repetition on cases longer than 16" (circumference of Series 450 marking wheel). After the marking wheel has made its imprint, the two rollers ride on the case. When the end of the case is reached, the rollers fall off permitting the marking wheel to reset.

1. *Setting.* The recommended setting is shown in Figure 16.

2. *Conversion.* The anti-repeat assembly can easily be changed to the opposite "hand." Note that the ring is identified LEFT HAND on one side and RIGHT HAND on the other. Disassemble rollers, invert ring so that desired "hand" is up and reassemble rollers as shown in Figure 17.

ITEM NO	QTY	PART NUMBER	DESCRIPTION
1	2	F036978	Roller Axle
2	2	F036980	Roller, Anti-Repeat
3	1	F038030	Anti-Repeat Ring
4	2	F011162	#10 Lockwasher
5	2	F011153	#10-32 x 1/2 Screw

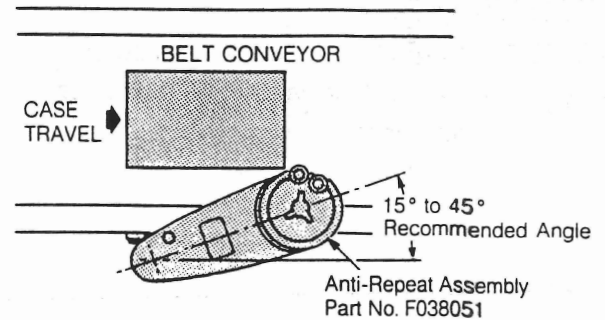
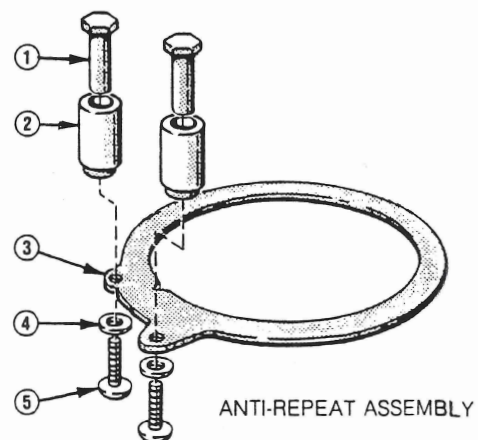


FIGURE 16



ANTI-REPEAT ASSEMBLY